

WATERFRONT FACILITY INSPECTION

PART II – PLANNING FOR INSPECTION

PILEBUCK

PUBLISHED 6 TIMES A YEAR

EST. 1984

THE INTERNATIONAL DEEP FOUNDATIONS
AND MARINE CONSTRUCTION MAGAZINE

JUL/AUG 2022
VOLUME 38, ISSUE 4



KEEP CALM AND DRILL ON!

**ROC'S HUNT
FOR THE ELUSIVE
OAK ISLAND
TREASURE**

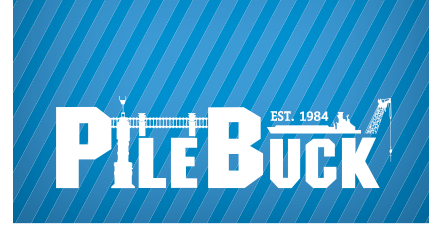
PLUS

MONITORING PILE STRESSES
During Dynamic Testing

MANUFACTURING STEEL SHEET PILE
Thoughts from Lee Wilczynski

BUYER'S GUIDE: BARGES
Including Top Recommended Suppliers

CONTENTS



VOL.38 NO.4 2022 | THE INTERNATIONAL DEEP FOUNDATIONS AND MARINE CONSTRUCTION MAGAZINE

COVER STORY

- 98 **KEEP CALM AND DRILL ON!**
ROC's Hunt for the Elusive
Oak Island Treasure

JOB STORY

- 14 **SHIBATAFENDERTEAM SUPPLIED
34 CELL FENDER SYSTEMS
FOR CONTECON TERMINAL
IN GUAYAQUIL, ECUADOR**
- 18 **CONSTRUCTION COMPANY
BENEFITS FROM CERTIFIED
INSTALLER TRAINING**
Washington D.C.
- 26 **DUCTILE IRON PILES
DEVELOP A LARGE CAPACITY
IN A SMALL SPACE**
Dickson, TN

PILE BUCK SPOTLIGHT

- 36 **BUYER'S GUIDE: BARGES**

PRODUCT SPOTLIGHT

- 54 **BEAM BEVELER – THE FASTEST
AND MOST VERSATILE WAY TO
BEVEL A BEAM IN THE FIELD**

FEATURE

- 66 **COPING WITH STRESS**
- 76 **THOUGHTS ON MANUFACTURING
STEEL SHEET PILE**
- 86 **WATERFRONT FACILITY
INSPECTION: PART 2 –
PLANNING FOR INSPECTION**

INDUSTRY NEWS

- 118 **LATEST HAPPENINGS FROM:
JD Fields, DFI, and GRL Engineers, Inc.**

IN EVERY ISSUE

- 10 **EDITOR'S NOTE**
- 12 **FEATURED PHOTO**
- 122 **ADVERTISER INDEX**



COVER STORY





KEEP CALM AND DRILL ON!

ROC's Hunt for the Elusive Oak Island Treasure

ROC's C3000H Buma Oscillator and grab excavating shafts in the Money Pit.



The comfort zone of most people in the construction industry is somewhere a little dirty and far from a spotlight. But some opportunities are worth stepping out of your comfort zone for the chance to work on a truly one of a kind project. For ROC Equipment, the call came in 2015 from the producers of a show called *The Curse of Oak Island*. CEO Vanessa Lucido, did not answer that call at first, but the History Channel producers were persistent. Once Lucido agreed, ROC was enlisted to join the hunt for the elusive Oak Island treasure. >>



As Seen On The History Channel
The Curse of Oak Island

New and Used Foundation Drilling Equipment

www.rocequipment.com

801-214-6124

sales@rocequipment.com



THE CURSE OF
OAK ISLAND



ROC's 3000mm temporary casing for shaft exploration on Oak Island.



Aerial view of Oak Island and location of the famous Money Pit.

On the island during her first season, Lucido quickly realized the expectation was for her to be not just behind the drill but in front of the camera explaining each method and the equipment used. It did not come easily but she relied on what she knew, her team, and just like that her comfort zone grew on screen to reach new depths.

For over 200 years, this small island off the coast of Nova Scotia has held fast to its mysterious past. The legends surrounding the island suggest several possibilities for the origins of the treasure vault hidden beneath the surface. Some suspect pirates. The many islands in Mahone Bay attracted pirates because it provided cover for them while scouting the heavily trafficked waters, many merchant ships going to and from Boston, just 200 nautical miles away. Others believe the Knights Templar were involved and that the treasure includes holy artifacts as well.

Each year, the Oak Island team turns up new artifacts, recovered from the spoils dug out of the shafts drilled with the ROC oscillators and sifted through meticulously by hand.

As they inch deeper into the island, they find few answers and many questions. Every season brings new obstacles as well as new evidence, and this season everyone on Oak Island and around the world was facing challenges presented by the same obstacle after COVID-19 hit in 2020.

REMAIN CALM, THIS IS NOT A DRILL

The most difficult challenges this season were not weather, unforeseen subterranean conditions or equipment breakdowns. Instead, many obstacles stemmed from the lingering effects of the global pandemic that swept through industries indiscriminately, altering the ways companies conducted business.

“Oak Island is always a complex project, but this year proved extra difficult with the ongoing pandemic. Never did I think we would have so many new obstacles to overcome,” said Jared Busby, (Consultant and Technician, ROC Equipment).

Under normal circumstances planning takes several months to coordinate the crews, equipment, clearances, and documentation needed to get to the island. The feat of transporting

EACH YEAR, THE OAK ISLAND TEAM TURNS UP NEW ARTIFACTS, RECOVERED FROM THE SPOILS DUG OUT OF THE SHAFTS DRILLED WITH THE ROC OSCILLATORS AND SIFTED THROUGH METICULOUSLY BY HAND. AS THEY INCH DEEPER INTO THE ISLAND, THEY FIND FEW ANSWERS AND MANY QUESTIONS.



The Oak Fellowship alongside, ROC and Irving commencing the dig at the Money Pit.



Crews connecting 3M casing sections during dig operations.

COVER STORY

all the necessary machines and supplies from the ROC yard in Phoenix, Arizona to the East Coast of Canada takes seven to ten days without any issues. However, this time around, some equipment sat at the border for 21 days, not including travel time on either side of that.

One piece of equipment brought on the journey for this season was the C3000H Oscillator, which weighs 140,000 pounds and is close to 16ft wide. The unit ships in one piece. Many of the truck loads were over width and many overweight, making the long journey to the island even harder.

Before even reaching the border, the ROC encountered entire agencies completely shut down or understaffed, causing delays with acquiring all the paperwork needed to work on the island.

Moving people was another hurdle. "It was challenging to set up crews, while trying to understand the implications of Covid," said Martin Gilly, (Senior Sales Manager, ROC Equipment). He continued "We had backup crews ready to start the process in case someone couldn't get a negative COVID test within 48 hours, which time ran out for some due to flight delays and they had to be retested before their next flight."

Once all of the crew and equipment were on site, there were still additional safety protocols put in place while working and filming. This included frequent COVID tests and social distancing. ROC was ready to handle whatever measures were necessary to carry on the search.

"When the pandemic happened, we did not shut down, we learned to adapt and push through safely," said Gilly.

THE MOST DIFFICULT CHALLENGES THIS SEASON WERE NOT WEATHER, UNFORESEEN SUBTERRANEAN CONDITIONS OR EQUIPMENT BREAKDOWNS. INSTEAD, MANY OBSTACLES STEMMED FROM THE LINGERING EFFECTS OF THE GLOBAL PANDEMIC THAT SWEEPED THROUGH INDUSTRIES INDISCRIMINATELY, ALTERING THE WAYS COMPANIES CONDUCTED BUSINESS.

Making a Global Impact since 1906



JX Piling RIG

Introducing the all new BSP JX25 piling rig based on a 20 tonne excavator. Designed for driving most types of foundation piles.

"Light weight RIG packing a big punch!"



RIC (Rapid Impact Compaction)

Use your excavator for ground compaction work. Fast, economical and dynamic ground compaction technique for low cost ground improvement of non cohesive soils.

"Get more from your standard excavator!"

BSP TEX LTD

Claydon Business Park, Gt Blakenham, Ipswich
Suffolk, UK, IP6 0NL

Tel: +44 (0) 1473 830431 Email: sales@bspif.co.uk
www.bsp-if.com



COVER STORY

100 Placing 3M exploratory shafts on Oak Island.



COVER STORY

JUST KEEP DRILLING

So with all the proper safety protocols in place, the hunt was back on!

Over 1,000 artifacts have been recovered from the island to date. And this season there is gold in the water of Oak Island. But we're here to talk about the dirt. ROC brings several tactical advantages to the table when dealing with the dirt of Oak Island.

The foundation drilling specialists focus on the Money Pit, the location of the original searcher's shaft, though there are areas all over the island that have proven fruitful. With ROC's BUMA C3000H Crane Mount Oscillator and P5318C BUMA Power Pack, shafts with a smaller percentage of deviation from top to bottom allowed the team more accuracy when drilling.

Then using two different BUMA grabs, a H2750B Hammer Grab and a S2710 Spherical Grab to bring the spoils to the surface, the team could see exactly what had been beneath their feet with minimal damage to large items like hand-cut timbers. The BUMA C3000H Crane Mount Oscillator was cutting an area of ten feet in diameter straight down to a depth of 200 feet installing temporary casing the entire length of the shaft.

With the number and variety of artifacts found on Oak Island, it might be harder to explain how the items found their way 150-200 feet in the ground if there never was a treasure. The search for answers continues and ROC remains at the heart of operations on the island. Not even the pandemic can stop this team.

"While it has been hard to get through the hurdles of the pandemic, we were successful, we made it happen. Mission accomplished," said Gilly.

WITH THE NUMBER AND VARIETY OF ARTIFACTS FOUND ON OAK ISLAND, IT MIGHT BE HARDER TO EXPLAIN HOW THE ITEMS FOUND THEIR WAY 150-200 FEET IN THE GROUND IF THERE NEVER WAS A TREASURE. THE SEARCH FOR ANSWERS CONTINUES AND ROC REMAINS AT THE HEART OF OPERATIONS ON THE ISLAND.



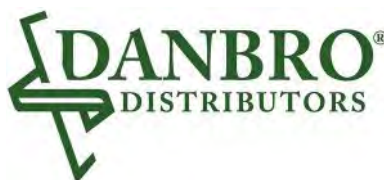
TIEBACKS

GS Parkway, NJ



STELCOR DRILLED-IN DISPLACEMENT MICROPILES

Navy Yard, Phila, PA



GROUTED HELICAL MICROPILE

Substation, Boston, MA



UNDERPINNING

Limerick Nuclear Power Plant, PA



WALKWAY

PSE&G, NJ

Providing Alternative Foundation Solutions for Over 25 Years

Danbro Delivers... www.danbro.com / info@danbro.com / Products Service Support: 215.271.7700



COVER STORY

KEEP CALM AND ROC ON

Despite the challenges faced by all this year, there is still reason to celebrate. This year marks ROC Equipment's 15th year in business. When asked about her success over the last ten years as a woman-owned construction company, Vanessa Lucido immediately deflected focus to the support of her team, and the legacy originally led by her father.

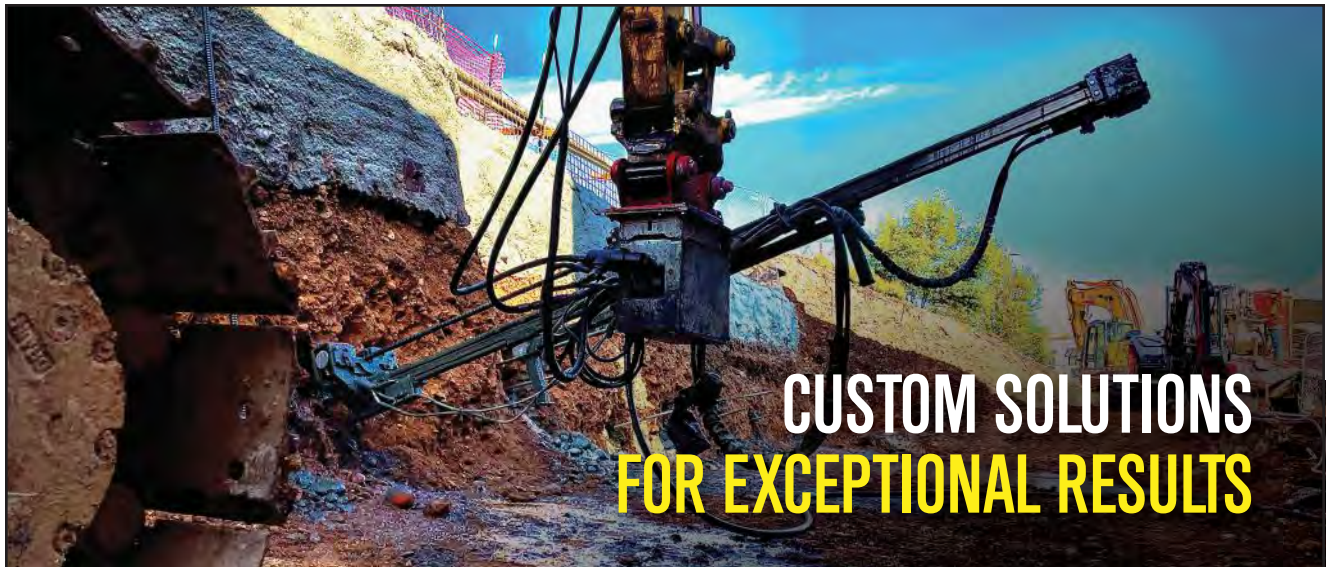
Lou Lucido founded the company in 2007 as a small foundation drilling company that served the western United States. Tragically, in 2012, he passed away in a work-related accident and his then 26-year-old daughter was suddenly the CEO of ROC.

Under Vanessa's leadership, ROC has grown into a global business with services that now include rental equipment, consulting services and training partnerships. Deep foundation drilling is the comfort zone for this company, and they excel at it, earning them a reputation of excellence across the industry.

Digging beyond the ROC comfort zone, Oak Island was an unknown adventure, unlike any other job they faced prior. But now they wouldn't miss the chance to join the rest of the motley crew of treasure hunters, archaeologists, historians, and other contractors to keep calm and drill on. ■



ROC's Buma Spherical Grab excavating material in the Money Pit.



CUSTOM SOLUTIONS FOR EXCEPTIONAL RESULTS

WESTERN EQUIPMENT SOLUTIONS

westernequipsolutions.com

PARTS | SERVICE | SALES | RENTALS | FINANCING

Salt Lake City, Utah: (801) 288.8919

Nisku, Alberta: (780) 770.8811

info@westernequipsolutions.com

soilmec

TEJ
TE ROCK DRILLS

LEFFER

TESAR
CONTRACT DRILLING EQUIPMENT

PTC
PAYAT GROUP

INTRIC
GROUTING SOLUTIONS

WILSON
DRILL TOOLS

Junttan

ESKRIDGE